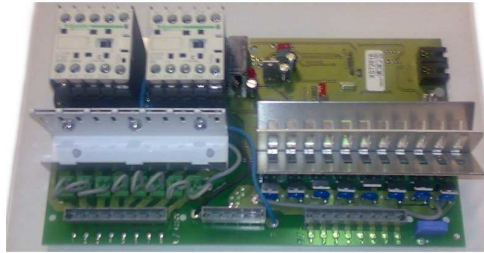


DATA SHEET, CHANGEOVER CIRCUIT BOARD FOR TKT66/67xx- CENTRAL BATTERY UNITS



TYPE:	XST2618
--------------	----------------

ELECTRICAL CHARACTERISTICS:

INPUT AC VOLTAGE	230V AC +- 10%
INPUT DC VOLTAGE	173..290 VDC
CIRCUIT POWER	350VA
TOTAL POWER	2800VA MAX

MECHANICAL CHARACTERISTICS:

DIMENSIONS (WxHxL):	141 x 70 x 255 mm
WEIGHT:	850 g
MATERIAL OF THE PC-BOARD:	FR-4
MATERIAL OF THE CASING:	NO CASING
CONNECTORS:	BLOCK CONNECTOR 1,5mm2

ENVIRONMENTAL CONDITIONS:

AMBIENT TEMPERATURE RANGE:	CONTINUOUS OPERATION:	+10°C ... +40°C
	STORAGE:	-40°C ... +70°C

EMC:

IMMUNITY:	ACCORDING TO: EN 61000-6-2
EMISSIONS:	ACCORDING TO: EN 50081-2

SPECIAL FEATURES:

<p>INCLUDES 8 CIRCUITS / 350VA. OUTPUT CIRCUITS CAN BE CONNECTED TO PARALLEL 4x700VA or 2x1400VA INCLUDES ALL TAPSA CONTROL FUNCTIONS WORKING MODE FUNCTION CAN SELECTED BY DIP-SWITCH UP TO 32 ADDRESSABLE LUMINAIRES CAN BE MONITORED / CIRCUIT SELECTABLE TO OPERATE WITH ADDRESSABLE MONITORING OR CIRCUIT MONITORING MODE LOOPING TO CHOOSE MAINTAINED OR NON-MAINTAINED USAGE</p>
--

WRITTEN BY:	04.12.2009 / MK	UPDATED BY:	04.12.2009 / TVA
APPROVED BY:		APPROVED BY:	

We reserve the right to make modifications without prior notice