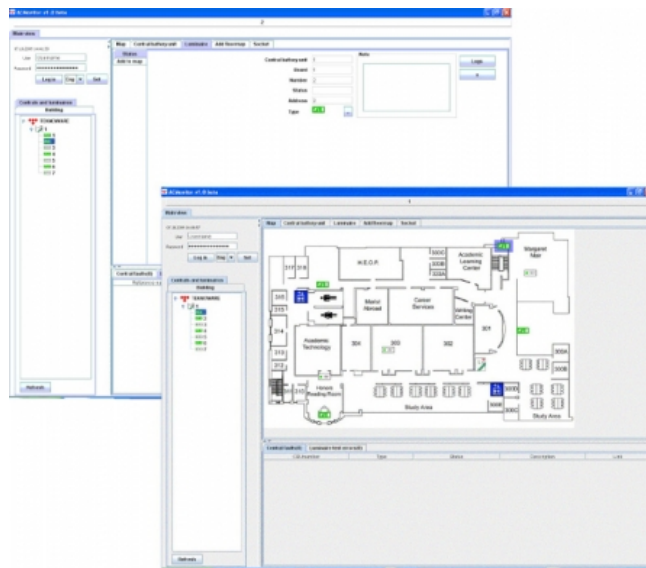


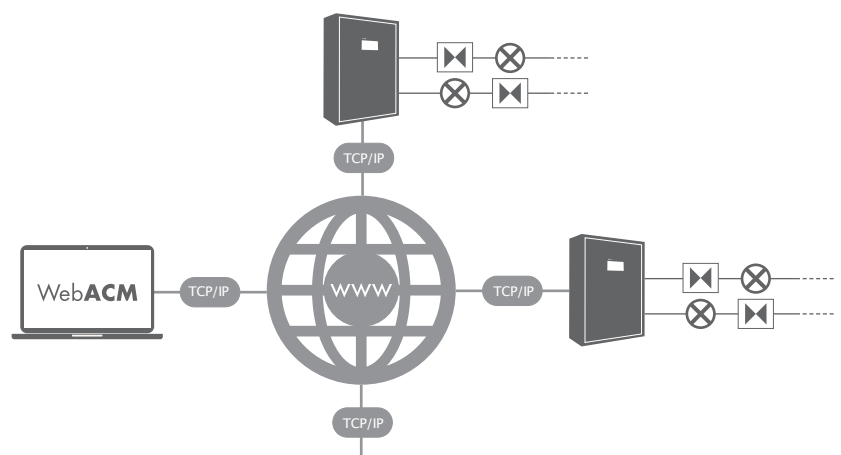
Web Advanced Central Monitoring (WebACM) TST7561



Web Advanced Central Monitoring software (WebACM) is a centralized remote monitoring system, which connects to an Ethernet network, for our addressable central battery systems.

WebACM allows you to monitor up to 150 central battery systems at the same time. WebACM enables luminaires and central battery systems to be placed on a building's layout drawings. The software also provides information about faulty luminaires, executed tests, faults, and so on. The test history from the system is automatically saved to a log file.

WebACM needs Java supported software and a PC with an internet connection. In fault situations, WebACM sends a notification automatically to email addresses specified by the user.



We reserve the rights to make modifications without notice.
Copyright © 2024 Teknoware. All rights reserved.
Date: January 17, 2024 | Source:
www.teknoware.com/en/emergency-lighting/acm-pc-software-tst5131



Teknoware Oy | P.O. Box 19, 15101 Lahti | Ilmarisentie 8, 15200 Lahti Finland
Tel +358 3 883 020 | VAT-number FI01494751 | teknoware.com | emexit@teknoware.com