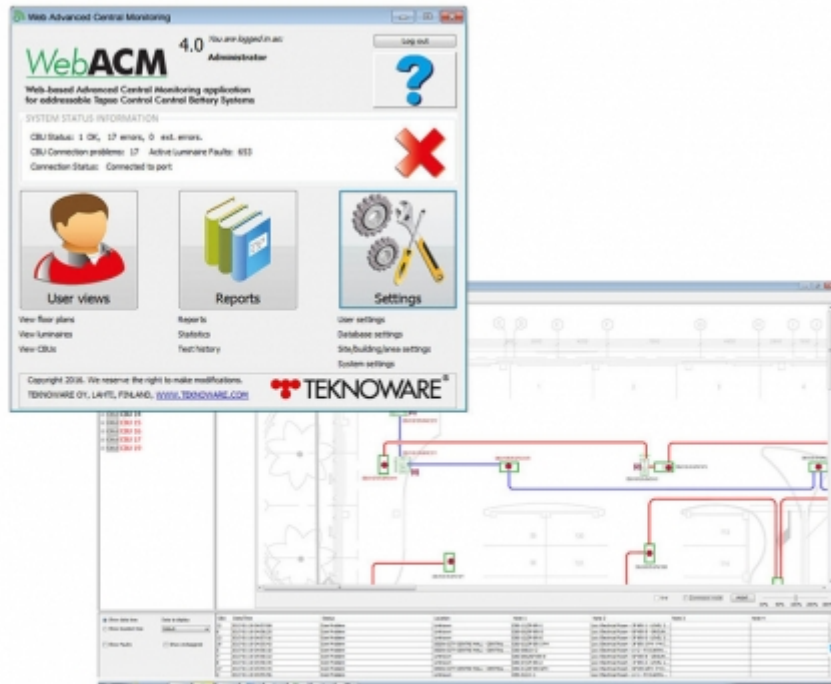


WEBACM SOFTWARE WITH BACNET INTERFACE TST5181



WebACM software BACnet Interface (max. 30 central battery systems)

WebACM enables central monitoring of the central battery systems via TCP/IP. The system consists of a Web module connected to a central battery unit. Each central battery unit has an individual IP address and an ordinary Internet browser serves as a user interface. This system indicates the state of the central battery unit and the luminaires connected to it and displays the test log book information. The user may also run luminaire and battery tests. WebACM is available for the central battery units in the TKT65/TKX65, TKT66/TKX66 and TKT67/TKX67 series, which are equipped with addressable monitoring function. This user-specific software enables the use of a mapping application which indicates the location of the equipment in the building. WebACM's PC Software screen displays the status of all the central battery units and the luminaires connected to them. The user may also run battery and luminaire tests. WebACM saves the test log book information automatically as per the requirements of fire safety authorities. By using the computer equipped with WebACM and BACnet interface, it is possible to connect to a BACnet building management system.

One WebACM software can connect upto 150 Central Battery Units.

One BACnet interface can be used for CBUs upto 30nos. However more BACnet interfaces (one for each 30 CBUs) can be connected further to reach 150CBUs in total. A total of 5nos BACnet interfaces can be connected to one WebACM software.

Product Code	TST5181
Customs Code	85044090
GTIN Code	6438045022970
ETIM Product Class	EC002537

We reserve the rights to make modifications without notice.
Copyright © 2024 Teknoware. All rights reserved.
Date: January 17, 2024 | Source:
www.teknoware.com/en/emergency-lighting/webacm-software-bacnet-interface-tst5181

Teknoware Oy | P.O. Box 19, 15101 Lahti | Ilmarisentie 8, 15200 Lahti Finland
Tel +358 3 883 020 | VAT-number FI01494751 | teknoware.com | emexit@teknoware.com

