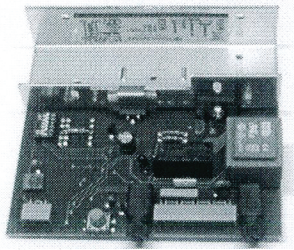


**DATA SHEET, BATTERY CHARGER FOR TKX65/66xx/TKX68xx - CENTRAL BATTERY UNITS**



<b>TYPE:</b>	<b>XST0201</b>
--------------	----------------

**ELECTRICAL CHARACTERISTICS:**

INPUT AC VOLTAGE	230V AC +- 10% 50/60Hz
INPUT POWER	1330 VA MAX
POWER FACTOR	>0,7
BATTERY CHARGING CAPACITY	18 X 6,5...65Ah ( 4,3A max)
BOOST / TRICKLE VOLTAGE	255VDC / 243VDC
CHARGE CHARACTERISTIC LINE	IU

**MECHANICAL CHARACTERISTICS:**

DIMENSIONS (WxHxL):	134 x 40 x 130 mm
WEIGHT:	280 g
MATERIAL OF THE PC-BOARD:	FR-4
MATERIAL OF THE CASING:	NO CASING
CONNECTORS:	BLOCK CONNECTORS 1,5mm2

**ENVIRONMENTAL CONDITIONS:**

AMBIENT TEMPERATURE RANGE:	CONTINUOUS OPERATION:	+10°C ... +40°C
	STORAGE:	-40°C ... +70°C

**EMC:**

IMMUNITY:	ACCORDING TO: EN 61000-6-2
EMISSIONS:	ACCORDING TO: EN 61000-6-3

**SPECIAL FEATURES:**

<ul style="list-style-type: none"> <li>• TEMPERATURE COMPENSATION</li> <li>• BATTERY CAPACITY CAN BE SELECTED BY DIP-SWITCH</li> <li>• WORKS WITH LEAD-ACID BATTERIES</li> <li>• TRICKLE CHARGE</li> <li>• FORCED DEEP DISCHARGE RECOVERY VIA PUSH-BUTTON</li> <li>• NOTE: COMPATIBLE ONLY WITH TKX65/66xx/TKX68XX - CENTRAL BATTERY UNITS</li> <li>• REQUIRES TRANSFORMER FOR AC SUPPLY</li> </ul>
---

WRITTEN BY:	28.9.2012 / MLA	UPDATED BY:	01.10.2012 / MK
CHECK BY:		CHECK BY:	1.10.2012 TUA
APPROVED BY:		APPROVED BY:	1.10.12 [Signature]

We reserve the right to make modifications without prior notice